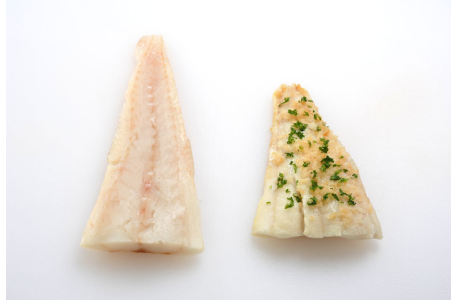


Cod / 5 Oz IQF Pacific Cod Tail

UCC14 Code: 00073129085760 UCC12 Code: 073129085760 SUPC Code: 0802312



PRODUCT/PACKAGING INFORMATION:

Case Cube	Case Configuration	Pallet Configuration	Cases per Pallet
0.392	14.5 x 11 x 4.25	11x16	176

Pack Size	Unit Weight	Gross Weight	Net Weight
1/10#	10	11	10

Farm/Fishery Specification: MSC
 Frozen Shelf Life: 18 months from date of manufacture.
 Allergens: Yes. Please see label.
 Approx. Servings per Case: 32
 Labeling:
 Freezing: IQF

PRODUCT LABEL:

PC # 8576
ICYBAY PACIFIC COD TAILS
5 OZ TAILS
IQF SKINLESS BONELESS
 INGREDIENTS: Cod, Sodium Tripolyphosphate
 CONTAINS: Cod
 Pack 1/10 lbs.
 Product of China
 Wild Caught
NET WT 10 LB (4.54 kg)
 SG PO#
 Pack Date:

FOR PLACEMENT OF GTIN
 BARCODE ONLY

GTIN # 00073129085760

Nutrition Facts	
Serving Size 4 oz (113g)	
Servings Per Container	
Amount Per Serving	
Calories 90	Calories from Fat 5
% Daily Value*	
Total Fat 1g	1%
Saturated Fat 0g	0%
Trans Fat 0g	
Cholesterol 50mg	16%
Sodium 60mg	3%
Total Carbohydrate 0g	0%
Dietary Fiber 0g	0%
Sugars 0g	
Protein 20g	
Vitamin A 0%	Vitamin C 2%
Calcium 2%	Iron 2%
*Percent Daily Values are based on a 2,000 calorie diet. Your daily values may be higher or lower depending on your calorie needs.	
Calories: 2,000 2,500	
Total Fat	Less than 65g 80g
Saturated Fat	Less than 20g 25g
Cholesterol	Less than 300mg 300mg
Sodium	Less than 2,400mg 2,400mg
Total Carbohydrate	300g 375g
Dietary Fiber	25g 30g
Calories per gram: Fat 9 • Carbohydrate 4 • Protein 4	

Nutrition Facts	
Serving Size (100g)	
Servings Per Container	
Amount Per Serving	
Calories 80	Calories from Fat 5
% Daily Value*	
Total Fat 0.5g	1%
Saturated Fat 0g	0%
Trans Fat 0g	
Cholesterol 45mg	14%
Sodium 55mg	2%
Total Carbohydrate 0g	0%
Dietary Fiber 0g	0%
Sugars 0g	
Protein 18g	
Vitamin A 0%	Vitamin C 2%
Calcium 2%	Iron 2%
*Percent Daily Values are based on a 2,000 calorie diet. Your daily values may be higher or lower depending on your calorie needs.	
Calories: 2,000 2,500	
Total Fat	Less than 65g 80g
Saturated Fat	Less than 20g 25g
Cholesterol	Less than 300mg 300mg
Sodium	Less than 2,400mg 2,400mg
Total Carbohydrate	300g 375g
Dietary Fiber	25g 30g
Calories per gram: Fat 9 • Carbohydrate 4 • Protein 4	