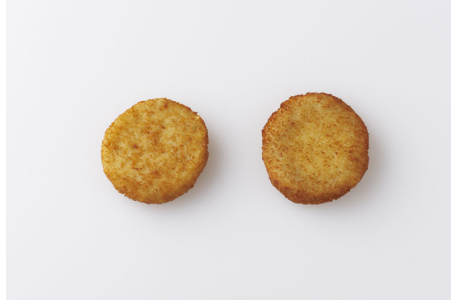


## Surimi / Oven-Ready Imitation Krab Cake 3 oz

UCC14 Code: 00073129811840 UCC12 Code: 073129811840 SUPC Code: 0725376



### PRODUCT/PACKAGING INFORMATION:

Case Cube	Case Configuration	Pallet Configuration	Cases per Pallet
0.473	13.19 x 9.49 x 6.563	14x8	112
Pack Size	Unit Weight	Gross Weight	Net Weight
1/10#	10	11	10

Farm/Fishery Specification:  
Frozen Shelf Life: 18 months from date of manufacture.  
Allergens: Yes. Please see label.  
Approx. Servings per Case: 53  
Labeling: Oven Ready  
Freezing: IQF

### PRODUCT LABEL:

LOT# ??????? 2661

PC#81184

**ICYBAY  
OVEN-READY  
IMITATION KRAB CAKE 3 OZ**

**INGREDIENTS:** Imitation Crab Meat (Surimi (Alaska Pollock, sugar, sodium tripolyphosphate (to retain moisture)), water, wheat or corn starch, tapioca starch, egg white, sugar, soybean oil, salt, mirin (rice wine, glucose syrup), crab extract, crab flavor, cayenne and paprika added for color), Alaska Pollock, water, enriched bleached wheat flour (flour, niacin, reduced iron, thiamine mononitrate, riboflavin, folic acid), modified food starch, yellow corn flour, dehydrated potato (potatoes, mono and diglycerides, sodium acid pyrophosphate, citric acid), salt, sugar, dextrose, contains less than 2% of dehydrated vegetables (onion, garlic, green onion, parsley), maltodextrin, spices, mustard, Pollock protein, yeast, canola oil, natural flavor, natural butter flavor, spice extractives, oleoresin paprika. Precooked in canola, cottonseed and/or soybean oil.

**Contains: Pollock, Wheat, Soy, Egg, Milk.**

COOKING INSTRUCTIONS: CONVECTION OVEN: Preheat oven to 375°F. Place frozen cakes on baking sheet and bake 14-16 minutes, or until internal temperature reaches 160°F. \* Turn cakes over halfway through bake time. CONVENTIONAL OVEN: Preheat oven to 425°F. Place frozen cakes on baking sheet and bake 15-17 minutes, or until internal temperature reaches 160°F. \* Turn cakes over halfway through bake time.

NET WT. 10 LBS. (4.54 Kg)

**NutraPure.**  
100% NATURAL  
no healthy vitamins

**KEEP FROZEN** 2661

PC#81184

**ICYBAY  
OVEN-READY  
IMITATION KRAB CAKE 3 OZ**

00073129811840

DISTRIBUTED BY: SLADE GORTON & CO.,  
BOSTON, MA 02118

### Nutrition Facts

Serving Size 1 Cake (84g)  
Servings Per Container about 53

Amount Per Serving	
<b>Calories 170</b>	<b>Calories from Fat 60</b>
<b>% Daily Value*</b>	
<b>Total Fat 6g</b>	<b>9%</b>
Saturated Fat 0.5g	3%
Trans Fat 0g	
<b>Cholesterol 15mg</b>	<b>5%</b>
<b>Sodium 360mg</b>	<b>15%</b>
<b>Total Carbohydrate 22g</b>	<b>7%</b>
Dietary Fiber 1g	4%
Sugars 1g	
<b>Protein 6g</b>	
Vitamin A 0%	Vitamin C 0%
Calcium 2%	Iron 10%

\*Percent Daily Values are based on a 2,000 calorie diet. Your daily values may be higher or lower depending on your calorie needs.

	2,000	2,500
Total Fat	Less than 65g	80g
Saturated Fat	Less than 20g	25g
Cholesterol	Less than 300mg	300mg
Sodium	Less than 2,400mg	2,400mg
Total Carbohydrate	300g	375g
Dietary Fiber	25g	30g

Calories per gram:

### Nutrition Facts

Serving Size (100g)  
Servings Per Container

Amount Per Serving	
<b>Calories 200</b>	<b>Calories from Fat 70</b>
<b>% Daily Value*</b>	
<b>Total Fat 7g</b>	<b>11%</b>
Saturated Fat 0.5g	3%
Trans Fat 0g	
<b>Cholesterol 15mg</b>	<b>5%</b>
<b>Sodium 420mg</b>	<b>18%</b>
<b>Total Carbohydrate 26g</b>	<b>9%</b>
Dietary Fiber 1g	4%
Sugars 1g	
<b>Protein 7g</b>	
Vitamin A 0%	Vitamin C 0%
Calcium 4%	Iron 15%

\*Percent Daily Values are based on a 2,000 calorie diet. Your daily values may be higher or lower depending on your calorie needs.

	2,000	2,500
Total Fat	65g	80g
Saturated Fat	Less than 20g	25g
Cholesterol	Less than 300mg	300mg
Sodium	Less than 2,400mg	2,400mg
Total Carbohydrate	300g	375g
Dietary Fiber	25g	30g

Calories per gram:  
Fat 9 • Carbohydrate 4 • Protein 4