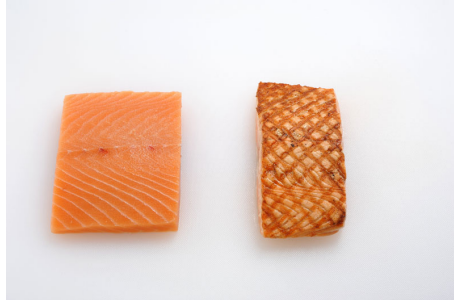


Salmon / "8 Oz Atlantic Salmon Fillet, Skinless Chile"

UCC14 Code: 00073129809892 UCC12 Code: 073129809892 SUPC Code: 8557009



PRODUCT/PACKAGING INFORMATION:

Case Cube	Case Configuration	Pallet Configuration	Cases per Pallet
0.368	15.5x10.25x4	10x10	100

Pack Size	Unit Weight	Gross Weight	Net Weight
1/10#	10	11	10

Farm/Fishery Specification:
 Frozen Shelf Life: 18 months from date of manufacture.
 Allergens: Yes. Please see label.
 Approx. Servings per Case: 20
 Labeling:
 Freezing: Individually Vacuum Packed

PRODUCT LABEL:

PC # 80989

ICYBAY ATLANTIC SALMON

8 OZ PORTIONS

IVP SKINLESS BONELESS

INGREDIENT: Salmon, colored added

CONTAINS: Salmon

Pack 1/10 lbs.

Product of Chile

Farm Raised

NET WT 10 LB (4.54 kg)

SG PO#

Pack Date:

Not Labeled for Retail Sale

Thaw Instructions: Remove from bag & Thaw under refrigeration

FOR PLACEMENT OF GTIN
BARCODE ONLY

GTIN # 00073129809892

Nutrition Facts	
Serving Size 4 oz (113g) Servings Per Container	
Amount Per Serving	
Calories 240	Calories from Fat 140
% Daily Value*	
Total Fat 15g	23%
Saturated Fat 3.5g	17%
Cholesterol 60mg	21%
Sodium 65mg	3%
Total Carbohydrate 0g	0%
Dietary Fiber 0g	0%
Sugars 0g	
Protein 23g	
Vitamin A 2%	Vitamin C 8%
Calcium 2%	Iron 2%

*Percent Daily Values are based on a 2,000 calorie diet. Your daily values may be higher or lower depending on your calorie needs:

	Calories: 2,000	2,500
Total Fat	Less than 65g	80g
Saturated Fat	Less than 20g	25g
Cholesterol	Less than 300mg	300mg
Sodium	Less than 2,400mg	2,400mg
Total Carbohydrate	300g	375g
Dietary Fiber	25g	30g

Calories per gram:
Fat 9 • Carbohydrate 4 • Protein 4

Nutrition Facts	
Serving Size (100g) Servings Per Container	
Amount Per Serving	
Calories 210	Calories from Fat 120
% Daily Value*	
Total Fat 13g	21%
Saturated Fat 3g	15%
Cholesterol 55mg	18%
Sodium 60mg	2%
Total Carbohydrate 0g	0%
Dietary Fiber 0g	0%
Sugars 0g	
Protein 20g	
Vitamin A 2%	Vitamin C 6%
Calcium 0%	Iron 2%

*Percent Daily Values are based on a 2,000 calorie diet. Your daily values may be higher or lower depending on your calorie needs:

	Calories: 2,000	2,500
Total Fat	Less than 65g	80g
Saturated Fat	Less than 20g	25g
Cholesterol	Less than 300mg	300mg
Sodium	Less than 2,400mg	2,400mg
Total Carbohydrate	300g	375g
Dietary Fiber	25g	30g

Calories per gram:
Fat 9 • Carbohydrate 4 • Protein 4