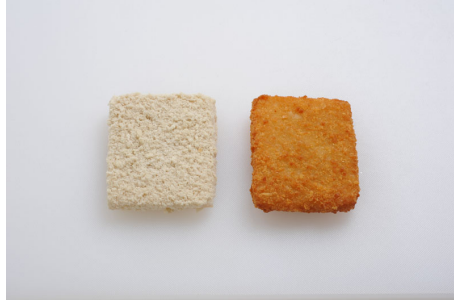


Your Better Choice in Seafood®

Pollock / Raw Breaded AK Pollock Square 4 oz

UCC14 Code: 00073129261577 UCC12 Code: 073129261577 SUPC Code: 0724316



PRODUCT/PACKAGING INFORMATION:

Case Cube	Case Configuration	Pallet Configuration	Cases per Pallet
0.473	13.19 x 9.44 x 6.563	14x8	112

Pack Size	Unit Weight	Gross Weight	Net Weight
1/10#	10	11	10

Farm/Fishery Specification: MSC
 Frozen Shelf Life: 18 months from date of manufacture.
 Allergens: Yes. Please see label.
 Approx. Servings per Case: 40
 Labeling:
 Freezing: IQF

PRODUCT LABEL:

LOT# ??????
 PC# 26157MSC

**ICYBAY
 RAW BREADED
 AK POLLOCK
 SQUARE 4 OZ.**

2 6 8 1

KEEP FROZEN 2 6 8 1
 PC# 26157MSC

INGREDIENTS: Alaska Pollock, bleached wheat flour, water, enriched wheat flour (flour, niacin, reduced iron, thiamine mononitrate, riboflavin, folic acid), enriched yellow corn flour (corn flour, niacin, reduced iron, thiamine mononitrate, riboflavin, folic acid), corn starch, salt, dextrose, contains less than 2% of leavening (sodium acid pyrophosphate, sodium bicarbonate), sugar, onion powder, expeller pressed sunflower oil, yeast, natural flavor, Pollock protein, spice extractive, caramel color, extractives of paprika and annatto. **Contains Pollock, Wheat**

COOKING INSTRUCTIONS: Deep fry frozen squares at 350°F for 4-5 minutes or until internal temperature reaches 160°F.

Made with all natural
NutraPure.
...a healthy solution

NET WT. 10 LBS. (4.54 Kg)

**ICYBAY
 RAW BREADED
 AK POLLOCK
 SQUARE 4 OZ.**



00073129261577

DISTRIBUTED BY: SLADE GORTON & CO.,
 BOSTON, MA 02118

Nutrition Facts

Serving Size 1 Square (112g)
 Servings Per Container 40

Amount Per Serving		Calories from Fat 10	
		% Daily Value*	
Calories 170			
Total Fat 1g		2%	
Saturated Fat 0g		0%	
Trans Fat 0g			
Cholesterol 50mg		17%	
Sodium 480mg		20%	
Total Carbohydrate 26g		9%	
Dietary Fiber 1g		4%	
Sugars 1g			
Protein 15g			
Vitamin A 0%		Vitamin C 0%	
Calcium 4%		Iron 6%	

*Percent Daily Values are based on a 2,000 calorie diet. Your daily values may be higher or lower depending on your calorie needs.

	Calories: 2,000	2,500
Total Fat	Less than 65g	80g
Saturated Fat	Less than 20g	25g
Cholesterol	Less than 300mg	300mg
Sodium	Less than 2,400mg	2,400mg
Total Carbohydrate	300g	375g
Dietary Fiber	25g	30g

Calories per gram:
 Fat 9 • Carbohydrate 4 • Protein 4

Nutrition Facts

Serving Size (100g)
 Servings Per Container

Amount Per Serving		Calories from Fat 10	
		% Daily Value*	
Calories 150			
Total Fat 1g		2%	
Saturated Fat 0g		0%	
Trans Fat 0g			
Cholesterol 45mg		15%	
Sodium 430mg		18%	
Total Carbohydrate 23g		8%	
Dietary Fiber 1g		4%	
Sugars 1g			
Protein 13g			
Vitamin A 0%		Vitamin C 0%	
Calcium 4%		Iron 4%	

*Percent Daily Values are based on a 2,000 calorie diet. Your daily values may be higher or lower depending on your calorie needs.

	Calories: 2,000	2,500
Total Fat	Less than 65g	80g
Saturated Fat	Less than 20g	25g
Cholesterol	Less than 300mg	300mg
Sodium	Less than 2,400mg	2,400mg
Total Carbohydrate	300g	375g
Dietary Fiber	25g	30g

Calories per gram:
 Fat 9 • Carbohydrate 4 • Protein 4

sodexo

<http://sodexoseafood.com>

Quality of Daily Life Solutions