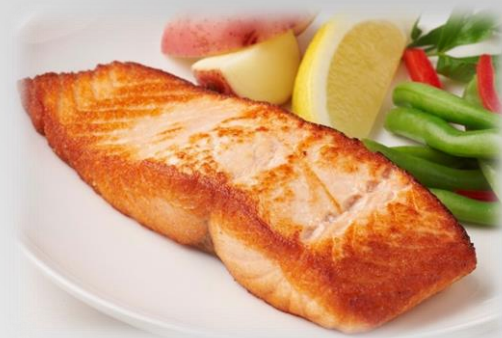




# ATLANTIC SALMON



Scientific Name:	<i>Salmo Salar</i>
ORIGIN:	Chile
WILD/FARMED:	Farm raised
HARVEST METHOD:	Aquaculture
FORM/PACK SIZE:	Skinless Boneless portions, IVP, 1-10LB
AVAILABILITY:	Year round
FRESH/FROZEN:	Frozen
ALTERNATIVE TO:	Trout, Arctic Char
SUSTAINABILITY RATING:	Best Choice – BAP Certified

## KEY NOTES:

Atlantic Salmon has a milder flavor than that of wild salmon. The meat is moderately firm and oily, although less fatty than that of wild king salmon.

SLADE GORTON CODE	Size	UPC	GTIN
PC# 80922	4 Oz	073129809229	00073129809229
PC# 80991	6 Oz	073129809915	00073129809915
PC# 80989	8 Oz	073129809892	00073129809892
PC# 81023	10 Oz	073129810232	00073129810232



## Nutrition Facts

Serving Size 4 oz (113g)  
Servings Per Container

Amount Per Serving

**Calories 130**    Calories from Fat 35

% Daily Value\*

**Total Fat 4g**    **6%**

Saturated Fat 0.5g    **3%**

**Cholesterol 65mg**    **22%**

**Sodium 65mg**    **3%**

**Total Carbohydrate 0g**    **0%**

Dietary Fiber 0g    **0%**

Sugars 0g

**Protein 23g**

Vitamin A 2%    •    Vitamin C 0%

Calcium 0%    •    Iron 4%

\*Percent Daily Values are based on a 2,000 calorie diet. Your daily values may be higher or lower depending on your calorie needs:

	Calories: 2,000	2,500
Total Fat	Less than 65g	80g
Saturated Fat	Less than 20g	25g
Cholesterol	Less than 300mg	300mg
Sodium	Less than 2,400mg	2,400mg
Total Carbohydrate	300g	375g
Dietary Fiber	25g	30g

Calories per gram:

Fat 9 • Carbohydrate 4 • Protein 4

## Product Details

### Packaging Information

Pack/Size (lbs)	Gross Weight (lbs)	Net Weight (lbs)	Case Cube (cu ft)	Configuration L x W x H (in)	Configuration TI x HI Pallet	Cases/Pallet
1/10	11	10	0.441	15.25 x 10 x 5	11x16	176

### Product Performance

Product Size	Pieces/Pound	Approximate Pieces/Case	Recommended Servings/Case	Shelf Life	Storage Temperature
4 Oz	4	40	40	18 months	0°F to -20°F
6 Oz	3-4	27-40	27-40	18 months	0°F to -20°F
8 Oz	2-3	20-27	20-27	18 months	0°F to -20°F
10 Oz	1-2	16	32	18 months	0°F to -20°F

## Features and Benefits

ICYBAY's farm raised Salmon portions are guaranteed to be 100% net weight that provide consistent size, quality and count in every case.

ICYBAY salmon is BAP certified and raised in natural environment, which gives the portions a natural eye appeal and flavor.

Salmon portions have an oily and moist meat, firm with a nice flake and pink color. For best cooking results, bake, broil, grill, poach or smoke.

Farm raised Atlantic Salmon is an excellent source of Omega-3s, which are extremely important and beneficial to our health

ICYBAY salmon portions are individually vacuum packed to lock in freshness and quality. Conveniently packed in 10 lb. master cases.

## Market Segments:

Assisted Living  
B&I  
College & Universities  
Country Clubs  
Cruise lines/Leisure  
Family Dining  
Fine Dining  
Hospitals  
Hotels/Resorts/Casino  
Nursing/Retirement Home  
Recreation Facility/ Sports Complex

**PC # 80922**

**ICYBAY ATLANTIC SALMON**

**4 OZ PORTIONS**

**IVP SKINLESS BONELESS**

INGREDIENT: Salmon, colored added

CONTAINS: Fish (Salmon)

**Pack 1/10 lbs.**

**Product of Chile**

**Farm Raised**

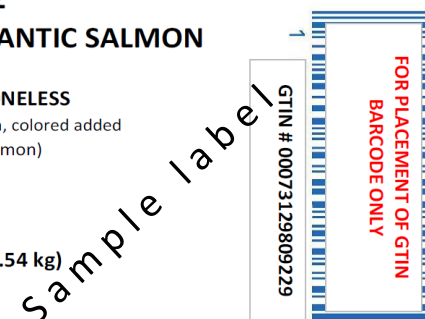
**NET WT 10 LB (4.54 kg)**

SG PO#

Pack Date:

Not Labeled for Retail Sale

Thaw Instructions: Remove from bag & Thaw under refrigeration





# ATLANTIC SALMON



Scientific Name:	<i>Salmo Salar</i>
ORIGIN:	Chile
WILD/FARMED:	Farm raised
HARVEST METHOD:	Aquaculture
FORM/PACK SIZE:	Skinless Boneless D-Trim Fillet, IVP, 1-22LB
AVAILABILITY:	Year round
FRESH/FROZEN:	Frozen
ALTERNATIVE TO:	Trout, Arctic Char
SUSTAINABILITY RATING:	Best Choice – BAP Certified

## KEY NOTES:

Atlantic Salmon has a milder flavor than that of wild salmon. The meat is moderately firm and oily, although less fatty than that of wild king salmon.

<u>SLADE GORTON CODE</u>	Size	UPC	GTIN
PC# 19671	2-3 Lb	073129196718	00073129196718

## Nutrition Facts

Serving Size 4 oz (113g)  
Servings Per Container

Amount Per Serving

**Calories 130**    Calories from Fat 35

% Daily Value\*

**Total Fat 4g**    **6%**

Saturated Fat 0.5g    **3%**

**Cholesterol 65mg**    **22%**

**Sodium 65mg**    **3%**

**Total Carbohydrate 0g**    **0%**

Dietary Fiber 0g    **0%**

Sugars 0g

**Protein 23g**

Vitamin A 2%    •    Vitamin C 0%

Calcium 0%    •    Iron 4%

\*Percent Daily Values are based on a 2,000 calorie diet. Your daily values may be higher or lower depending on your calorie needs:

	Calories:	2,000	2,500
Total Fat	Less than	65g	80g
Saturated Fat	Less than	20g	25g
Cholesterol	Less than	300mg	300mg
Sodium	Less than	2,400mg	2,400mg
Total Carbohydrate		300g	375g
Dietary Fiber		25g	30g

Calories per gram:

Fat 9 • Carbohydrate 4 • Protein 4

## Product Details

Packaging Information						
Pack/Size (lbs)	Gross Weight (lbs)	Net Weight (lbs)	Case Cube (cu ft)	Configuration L x W x H (in)	Configuration TI x HI Pallet	Cases/Pallet
1/22	24	22.05	0.851	21.65 x 12.35 x 5.5	5x11	55
Product Performance						
Product Size	Pieces/Pound	Approximate Pieces/Case	Recommended Servings/Case	Shelf Life	Storage Temperature	
2-3 Lb		7-10	40	18 months	0°F to -20°F	

## Features and Benefits

ICYBAY's farm raised Salmon portions are guaranteed to be 100% net weight that provide consistent size, quality and count in every case.

ICYBAY salmon is BAP certified and raised in natural environment, which gives the portions a natural eye appeal and flavor.

Salmon portions have an oily and moist meat, firm with a nice flake and pink color. For best cooking results, bake, broil, grill, poach or smoke.

Farm raised Atlantic Salmon is an excellent source of Omega-3s, which are extremely important and beneficial to our health

ICYBAY salmon portions are individually vacuum packed to lock in freshness and quality. Conveniently packed in 10 lb. master cases.

## Market Segments:

Assisted Living  
B&I  
College & Universities  
Country Clubs  
Cruise lines/Leisure  
Family Dining  
Fine Dining  
Hospitals  
Hotels/Resorts/Casino  
Nursing/Retirement Home  
Recreation Facility/ Sports Complex

**PC # 19671**

**ICYBAY ATLANTIC SALMON**

2-3 LB TRIM D FILLETS  
IVP SKIN ON, PBO

INGREDIENTS: Salmon, colored added  
CONTAINS: Fish (Salmon)

**Pack 1/22.05 lbs.**

**Product of Chile**

**Farm Raised**

**NET WT 22.05 LB (10 kg)**

SG PO#

Pack Date:

Not Labeled for Retail Sale

Thaw Instructions: Remove from bag & Thaw under refrigeration

Sample label

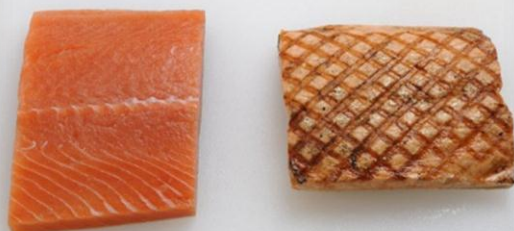
GTIN # 00073129196718

FOR PLACEMENT OF GTIN  
BARCODE ONLY





# KETA SALMON



Scientific Name:	<i>Salmo Salar</i>
ORIGIN:	China
WILD/FARMED:	Wild Caught
HARVEST METHOD:	Gillnet, hook
FORM/PACK SIZE:	Skinless Boneless portions, IVP, 1-10LB
AVAILABILITY:	Year round
FRESH/FROZEN:	Frozen
ALTERNATIVE TO:	Trout, Char, other Salmon
SUSTAINABILITY RATING:	Best Choice

## KEY NOTES:

Keta or Chum Salmon has the lowest content of oil and the lightest taste of all the Pacific salmon species. The firm texture and mild flavor makes it a great option for recipes that provide additional moisture. Keta salmon is a great option for salmon lovers who look for a less expensive option in their menu.

SLADE GORTON CODE		Size	UPC	GTIN
Skinless	PC# 80501	4 Oz	073129805016	00073129805016
	PC# 80509	6 Oz	073129805092	00073129805092
	PC# 80512	8 Oz	073129805122	00073129805122
Skin On	PC# 80511	6 Oz	073129805115	00073129805115

## Nutrition Facts

Serving Size 4 oz (113g)  
Servings Per Container

Amount Per Serving

**Calories 130**    Calories from Fat 35

% Daily Value\*

**Total Fat 4g**    **6%**

Saturated Fat 0.5g    **3%**

**Cholesterol 65mg**    **22%**

**Sodium 65mg**    **3%**

**Total Carbohydrate 0g**    **0%**

Dietary Fiber 0g    **0%**

Sugars 0g

**Protein 23g**

Vitamin A 2%    •    Vitamin C 0%

Calcium 0%    •    Iron 4%

\*Percent Daily Values are based on a 2,000 calorie diet. Your daily values may be higher or lower depending on your calorie needs:

	Calories: 2,000	2,500
Total Fat	Less than 65g	80g
Saturated Fat	Less than 20g	25g
Cholesterol	Less than 300mg	300mg
Sodium	Less than 2,400mg	2,400mg
Total Carbohydrate	300g	375g
Dietary Fiber	25g	30g

Calories per gram:  
Fat 9 • Carbohydrate 4 • Protein 4

## Product Details

### Packaging Information

Pack/Size (lbs)	Gross Weight (lbs)	Net Weight (lbs)	Case Cube (cu ft)	Configuration L x W x H (in)	Configuration TI x HI Pallet	Cases/Pallet
1/10	11	10	0.424	15.5 x 10.5 x 4.5	11x16	176

### Product Performance

Product Size	Pieces/Pound	Approximate Pieces/Case	Recommended Servings/Case	Shelf Life	Storage Temperature
4 Oz	4-8	40-80	40	18 months	0°F to -20°F
6 Oz	3-4	27-40	27-40	18 months	0°F to -20°F
8 Oz	2-3	20-27	20-27	18 months	0°F to -20°F

## Features and Benefits

ICYBAY's wild caught Salmon portions are guaranteed to be 100% net weight that provide consistent size, quality and count in every case.

ICYBAY Keta salmon comes from an MSC certified fishery .

Keta Salmon portions have less oily and moist meat than those of Atlantic salmon. Keta Salmon is very good for smoking.,

ICYBAY Keta salmon is an attractive selection since it combines firm texture, light flavor, economy and an eye appealing orange-pink color

ICYBAY salmon portions are individually vacuum packed to lock in freshness and quality. Conveniently packed in 10 lb. master cases.

## Market Segments:

Assisted Living  
B&I  
College & Universities  
Country Clubs  
Cruise lines/Leisure  
Family Dining  
Fine Dining  
Hospitals  
Hotels/Resorts/Casino  
Nursing/Retirement Home  
Recreation Facility/ Sports Complex

PC # 80509

**ICYBAY KETA SALMON**

6 OZ PORTIONS

IVP SKINLESS BONELESS

INGREDIENTS: Salmon

Pack 1/10 lbs.

Product of China

Wild Caught

NET WT 10 LB (4.54 kg)

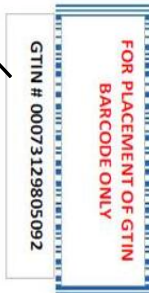
SG PO#

Pack Date:

Not Labeled for Retail Sale

Thaw Instructions: Remove from bag & Thaw under refrigeration

Sample label



**SLADE GORTON**  
NO ONE ELSE